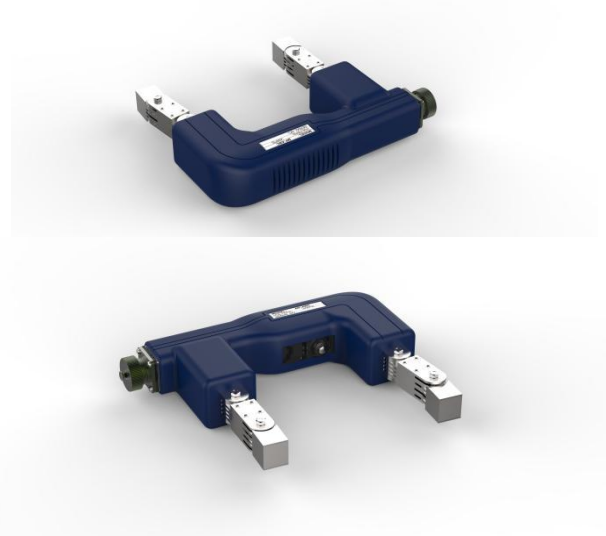
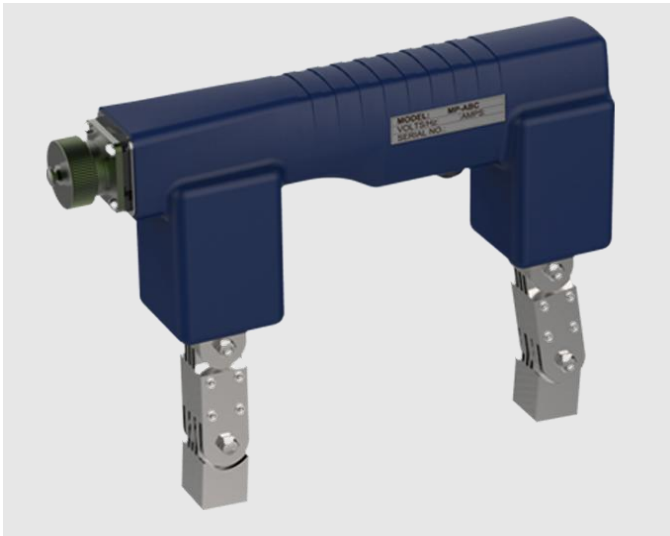


MY-7 AC/DC Magnetic Yoke



1.General description:

This is the new generation of light weight, ergonomically designed yokes that improve job performance and productivity by reducing operator arm and wrist fatigue when testing in tight, confined and overhead areas.

2.Technical data:

Power supply	220V,AC,50HZ,1A
Model type	MY-7
Magnetizing current method	AC/DC
Lifting power	AC \cong 6.0kg; DC \cong 18.0kg
Extremely distance	0-250mm,adjustable
AC cable length	220V 12V 3.0m
DC cable length	220V 12V 3.0m
Weight	2.3KG
Size	250mm*180mm
Working method	30s work,30s stop
Operating beat	It is suggested that in continuous long-time operation magnetization time \leq 30 s and off time \geq 30s